

ADVANTAGE SERIES DOORS



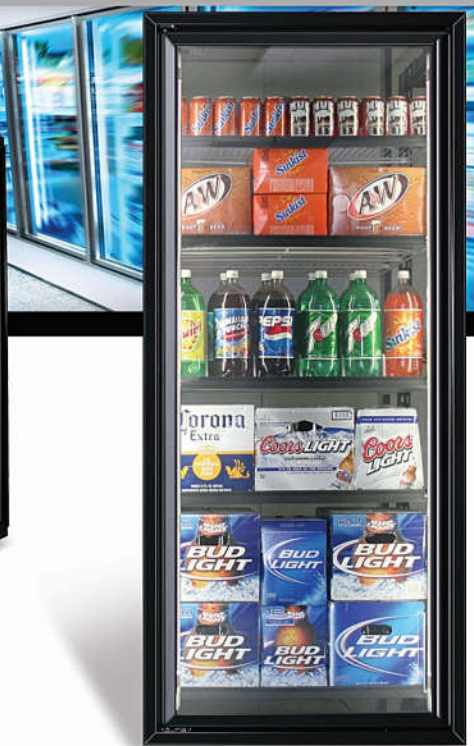
**Advantage Series Cooler doors are Energy Free
Designed with a Flat Mullion Field Reversibility and
2 Pane Low E Argon Gas Filled Glass Package.**

**For DOE Compliant Doors add the optional Light
Switch 1 per door and 1 controller for up to 15 doors.**

*The Advantage Series doors are built
with the same door and frame system as
our ECO Series to maximize energy efficiency
by providing better insallation qualities.*

*All Advantage Series cooler doors are energy free.
Designed with a flat mullion and field reversibility
the Advantage Series Doors offer upscale styling,
flexibility and dependability you can count on.*

*Add optional features like gravity flow shelving and full
length handles to give you the look you want at a price
you can't beat and a door that you can rely on for years
of dependable service.*



Phone: (800) 478-3790

Phone: (818) 361-8160

Fax: (818) 361-8152

www.cdsdoors.net

Commercial Display Systems LLC
17341 Sierra Highway
Canyon Country CA 91351