

SHELVING PARTS
Current Production



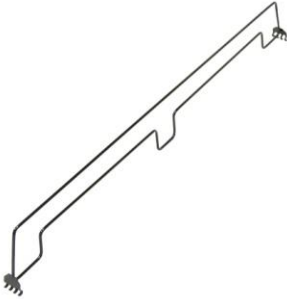
Heavy Duty Shelf
Part No. 10359-36 \$427.00
Part No. 10359-48 \$515.75



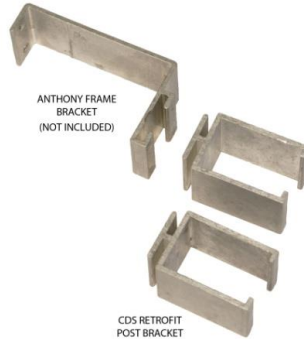
Wall Kit Brackets
Part No. 10021-WK \$57.75
(WALL BKT)



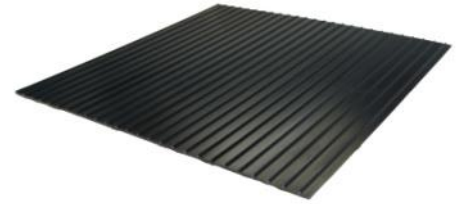
Standard Flat Shelf
Part No. 10025-27 \$119.25
Part No. 10025-36 \$234.75



Heavy Duty Divider*
Part No. 10378-36 \$28.50
Part No. 10378-48 \$28.50



Retrofit Post Brkt for Anthony Frame
Part No. 10189 \$18.75



Shelf Glide*
Part No. 10275 \$83.25



Post Bracket
Part No. 10045 \$26.00



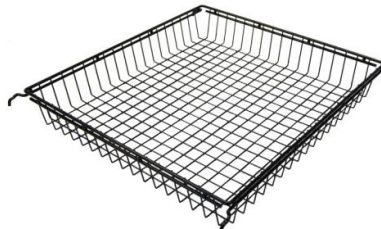
81" Post
Part No. 10040-G \$77.75 Galv
Part No. 10040-B \$101.25 Black
Part No. 10040-89 \$101.25 XL



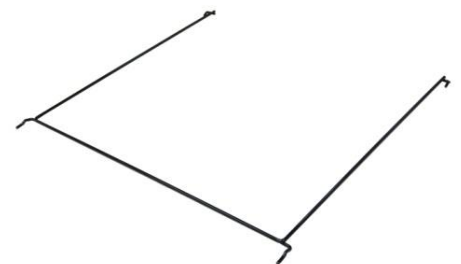
Floor Guard
Part No. 10446 \$130.50



Legacy Frame Bracket Lt
Part No. 10021-L \$26.00



Basket Shelf
Part No. 10191 \$259.75



Welded RIM Shelf Stop*
Part No. 10494-24 \$53.00
Part No. 10494-27 \$53.00
Part No. 10494-36 \$56.75



Legacy Frame Bracket Rt
Part No. 10021-R \$26.00

***Specify Door Size or Shelf Size**

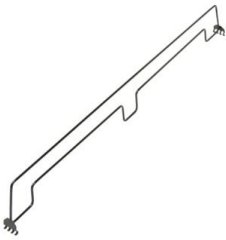
All prices are subject to change without notice. Prices quoted are F.O.B. factory. Any parts order returned to the factory for restocking is subject to a 50% restocking charge.

Minimum order is \$35.00. Orders that do not make minimums will be billed at \$35.00 plus shipping costs. All lamp orders for less than 1 full case (25 lamps) are subject to a \$35.00 crating charge.

Feb-21



SHELVING PARTS
Current Production



Std Flat Shelf Divider*

Part No. 10493-24 \$28.50
Part No. 10493-27 \$28.50
Part No. 10493-36 \$28.50



Price Tag Molding*

Part No. 10024 \$21.50



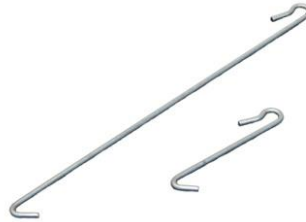
Heavy Duty Wall Brace

Part No. 10384 \$45.00



Front/Rear Stop*

Part No. 10162-23 \$23.75
Part No. 10162-26 \$23.75
Part No. 10162-28 \$26.75
Part No. 10162-30 \$26.75



"S" Hooks

Part No. 10287-S \$15.50
Small
Part No. 10287-L \$17.75
Large



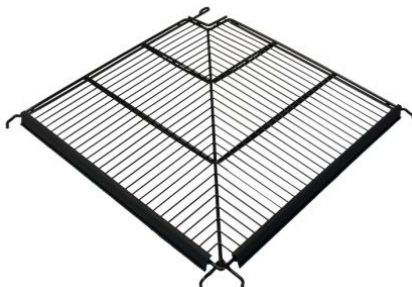
Side Stop*

Part No. 10161-24 \$23.75
Part No. 10161-27 \$23.75
Part No. 10161-36 \$32.75



Side Post Brace

Part No. 10381 \$67.50



Corner Shelf

Part No. 10195 \$593.50



Heavy Duty Anti-Sway
Brace

Part No. 10417 \$67.50

***Specify Door Size or Shelf Size**

All prices are subject to change without notice. Prices quoted are F.O.B. factory. Any parts order returned to the factory for restocking is subject to a 50% restocking charge.

Minimum order is \$35.00. Orders that do not make minimums will be billed at \$35.00 plus shipping costs. All lamp orders for less than 1 full case (25 lamps) are subject to a \$35.00 crating charge.